



GTTN

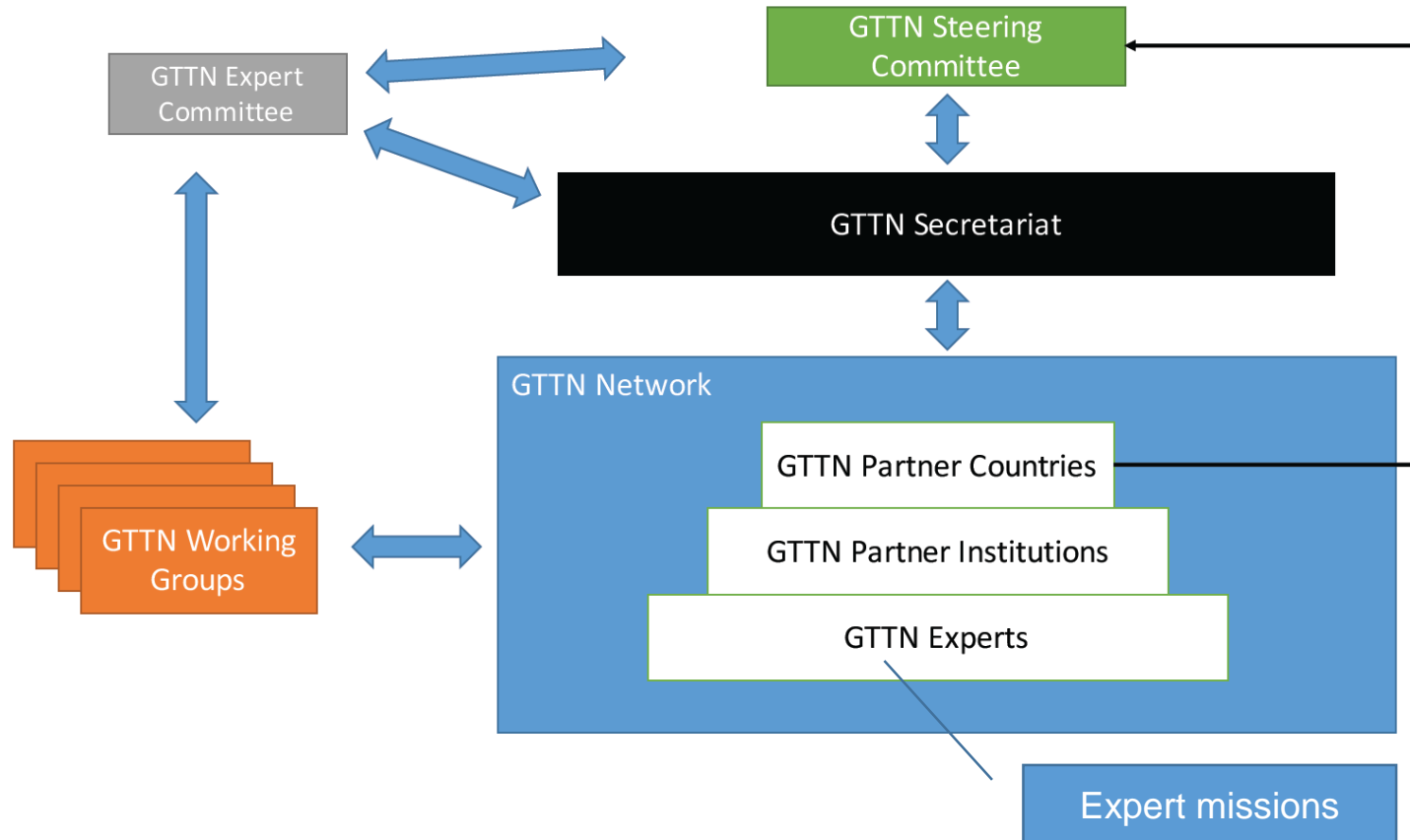
Global Timber
Tracking Network

www.globaltimbertrackingnetwork.org



GTTN2 Governance Structure and Working Groups

GTTN phase II Governance Structure



GTTN Steering Committee

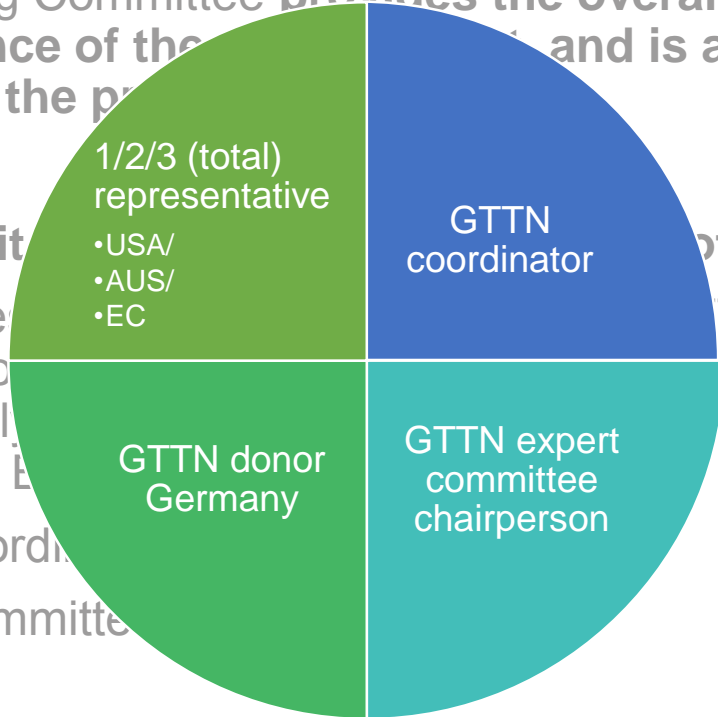
GTTN Steering Committee



The GTTN Steering Committee provides the overall oversight and strategic guidance of the project and is also the decision-making body of the project.

SC composition: it

- one country representative includes the donor (USA, Australia and the EC)
- GTTN project coordinator
- GTTN Expert Committee chairperson



of:

GTTN partnership, which includes representatives from various countries, such as US,

The SC meets physically once per year. The SC will be chaired by a Chairperson who will be elected/nominated by the SC for one year. The mandate of the Chairperson in the execution of the project should be redefined by the SC in its first meeting. It is expected that the Chairperson works in close collaboration with the GTTN Secretariat.

GTTN Steering Committee

GTTN Steering
Committee



The main aims and responsibilities:

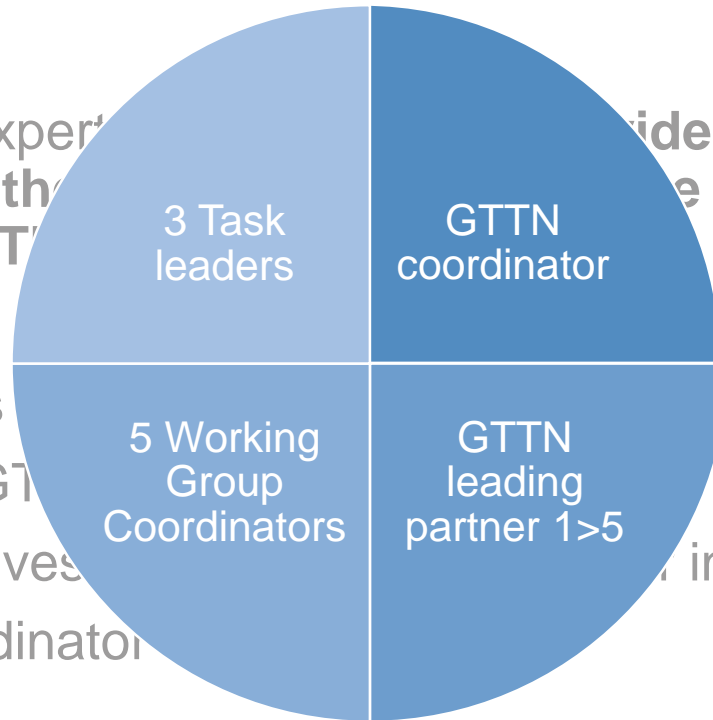
- provide strategic guidance and advice on the operations of Project;
- receive information and give feedback regarding the outputs, outcomes and impacts of the project activities;
- review and provide feedback on the annual report;
- review and approve annual work plan;
- decides on establishment and necessary adjustments of the working groups (WG);
- approve expert missions;
- provide guidance and advice to the Secretariat regarding planned project activities;
- decide on the regional focus and location of the Regional Workshops;
- keeps oversight of potentially new network partners.

GTTN Expert Committee

GTTN Expert
Committee



The GTTN Expert Committee provides technical and expert support to the link between the GTTN SC and GTTN



However, it is composed of:

- leaders of GTTN
- representatives of institutions (up to 5)
- GTTN coordinator

The EC will be chaired by a chairperson, who is selected by the EC members, for the full GTTN phase II duration.

(Virtual) meetings, at least twice per year.

GTTN Expert Committee

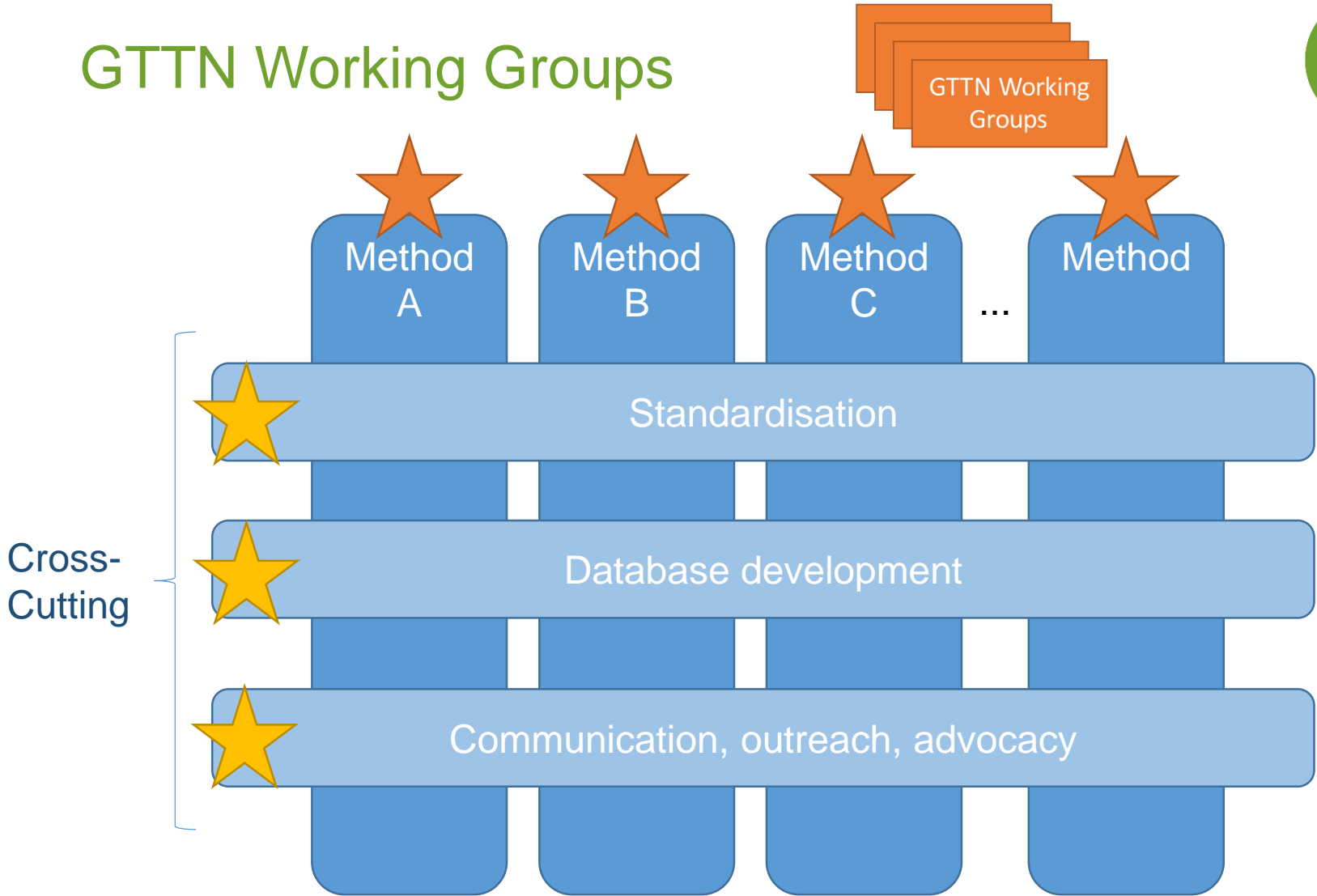
GTTN Expert
Committee



The aims and objectives of the EC are:

- elaborates for the SC concrete outputs and provides information about WG outcomes and impacts of the project activities;
- contributes to the annual work plan
- Propose to the SC the topics for the WG and members
- Propose expert missions
- Support the preparation of the agendas and support material for GTTN events
- Organises the review of GTTN publications

GTTN Working Groups



GTTN Working Groups



- Continuation and possible adjustments of the WG ToRs would need to be confirmed by the GTTN SC at the beginning of the project
- The WG would consist of GTTN experts and other experts active in the field of the WG.
- For each WG a WG leader would be appointed for the whole duration of the project.
- The WG leader coordinates and leads the work and is also the member of the EC.
- The experts' contributions to the WG work is voluntary (ref. wifme)
- The GTTN project will provide support for participation in events organised by the project (e.g., WG kick-off meeting, regional events, expert missions).



What next?

- Memorandum of Understanding
- Expression of Interest -> survey to global and wide network, extension of phase I expert networks



GTTN
Global Timber
Tracking Network

With support from



Federal Ministry
of Food
and Agriculture

by decision of the
German Bundestag

The objective of the Global Timber Tracking Network (GTTN) is to promote the operationalization of innovative tools for wood identification and origin determination, to assist the fight against illegal logging and related trade around the globe.

GTTN is an open alliance that cooperates along a joint vision and the network activities are financed through an open multi-donor approach. GTTN phase 2 coordination (2017-2019) is financed by the German Federal Ministry of Food and Agriculture (BMEL).